



*Our Community
Our Reef
Our Future*



Reef Urban Stormwater Quality Management Working Group

28 October 2009

Townsville



Why are we here today?

- » To identify areas where we as can work together collaboratively on areas of similar interest and mutual benefit with respect to GBR and local water quality improvement
- » To reduce costs in developing and implementing programs such as training packages, guidelines and compliance efforts
- » To improve our ability to leverage funding for developing and implementing identified programs
- » To improve our respective programs through sharing, learning and collaboration when appropriate.

Workshop objectives

- » Updates on WQIP and USWM related matters, including the outcomes of DERMs USWM project
- » Meet and interact with relevant USWM practitioners from 'major urban areas' in the Reef catchment
- » Share information and explore opportunities for collaboration
- » Discuss and establish a structure for ongoing collaboration, including the roles and responsibilities of participants
- » Develop an initial list of actions, priorities and a possible implementation strategy
- » Provide framework to demonstrate the collective capabilities of local government and regional NRM groups in helping to improve the water quality of our local waterways and GBR.

Protecting Reef Water Quality

Reef Water Quality Protection Plan

Policy driver in the GBR region

Goal - Halting and reversing the decline in water quality entering the Reef within 10 years



Objective 1 - Reduce the load of pollutants from diffuse sources in the water entering the Reef

Objective 2 - Rehabilitate and conserve areas of the Reef catchment that have a role in removing water borne pollutants

How?

Implement local actions and initiatives (e.g. the Creek to Coral partnership and Black Ross WQIP in Townsville)

What are Water Quality Improvement Plans?

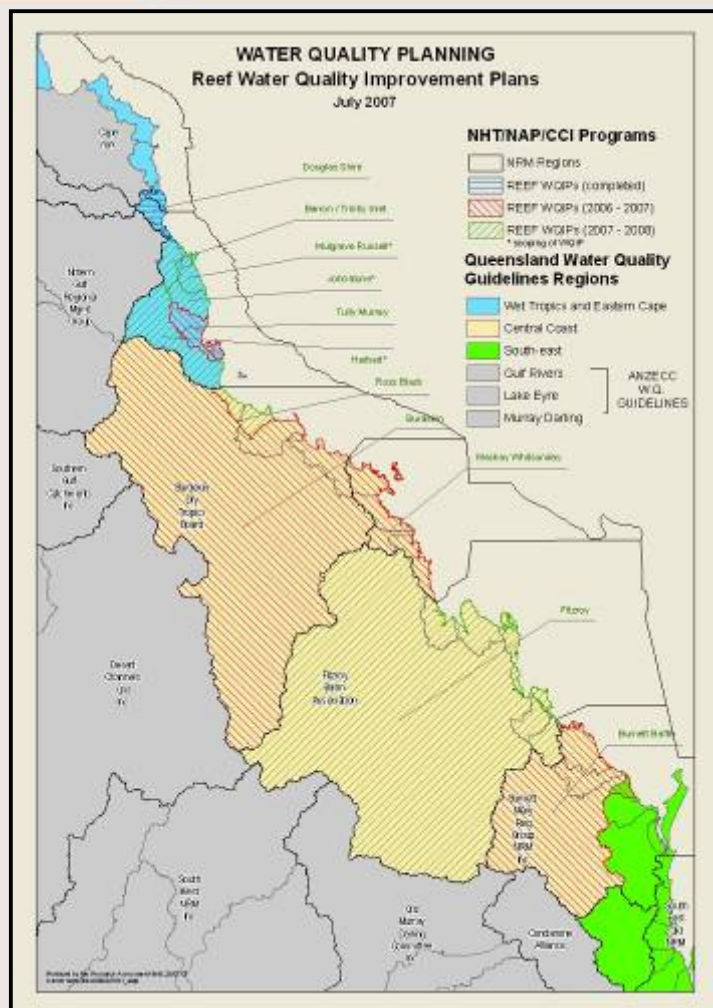
- » **Coastal Catchments Initiative (CCI)**
 - Previous Australian Government initiative
 - Aims to reduce discharge of pollutants to waterways and receiving waters (e.g. GBRWHA)

- » **How was CCI delivered?**
 - Development of Water Quality Improvement Plans

- » **Water Quality Improvement Plans**
 - Consistent with the Framework for Marine and Estuarine Water Quality Protection
 - Define waterway values, issues and WQ objectives
 - Recommend cost effective and timely projects for investment in achieving WQ improvement by all parties
 - Define and implement management strategies to sustain these improvements long term

- » **Implementation of WQIPs now**
 - Reef Rescue \$\$

Where are Water Quality Improvement Plans being developed?



- » Douglas WQIP (Terrain NRM/Cairns RC)
- » Barron WQIP (Terrain NRM)
- » Tully/Murray WQIP (Terrain NRM)
- » Black Ross WQIP (TCC/Creek to Coral)
- » Burdekin WQIP (NQDT NRM)
- » Mackay Whitsunday's WQIP (MW NRM)
- » Fitzroy Basin (FBA)
- » Burnett Baffle WQIP (BMRG)

Partners in the process...

- » Federal and State Government, and the Community...

Water Quality Improvement Plans are the primary mechanism for delivering Reef Plan/Reef Rescue outcomes...