

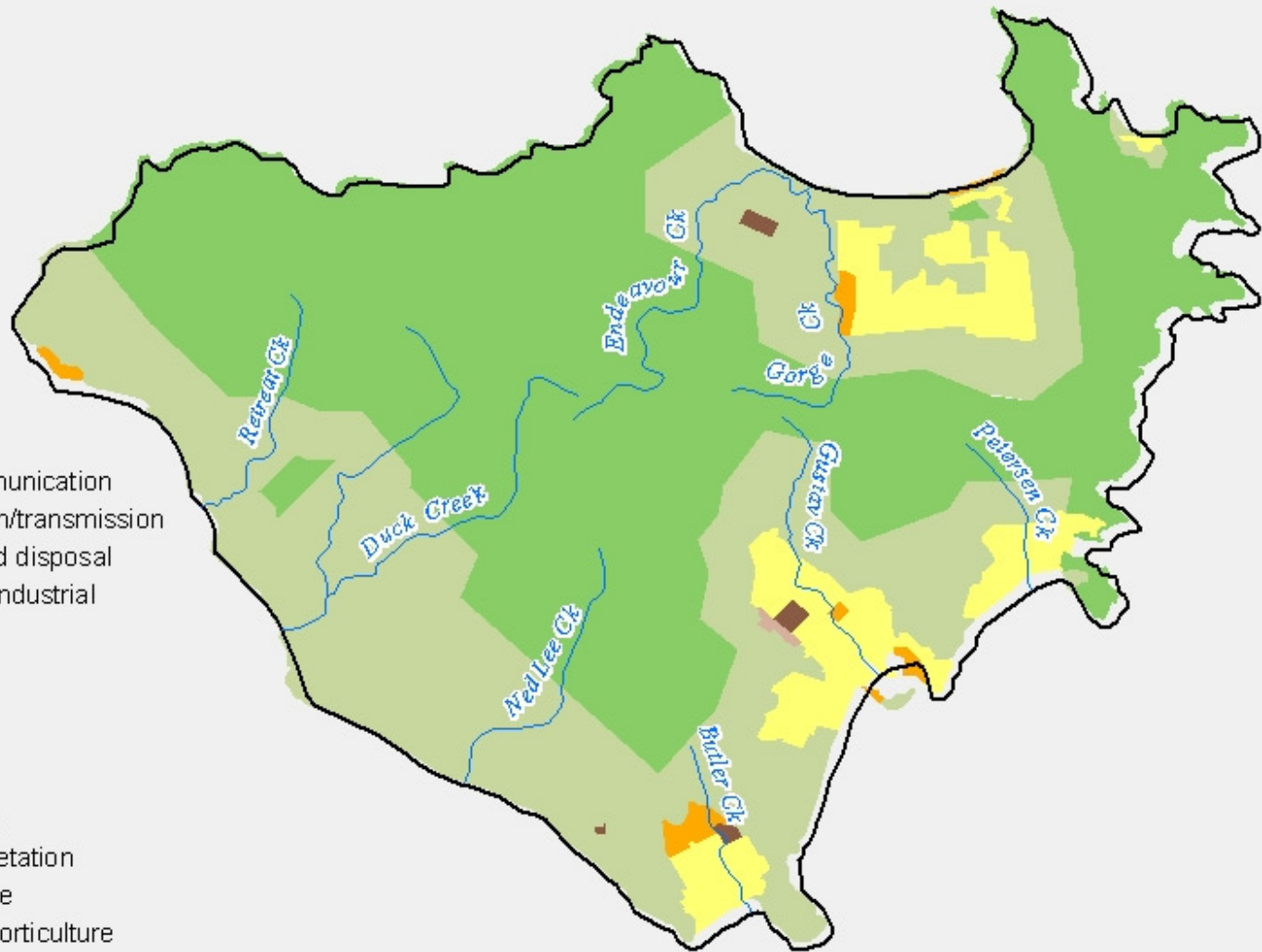
146°46'E 146°47'E 146°48'E 146°49'E 146°50'E 146°51'E 146°52'E 146°53'E

19°12'S
19°11'S
19°10'S
19°9'S
19°8'S
19°7'S
19°6'S

19°12'S
19°11'S
19°10'S
19°9'S
19°8'S
19°7'S
19°6'S

Landuse

-  Utilities
-  Transport and communication
-  Electricity generation/transmission
-  Waste treatment and disposal
-  Manufacturing and industrial
-  Services
-  Mining
-  Residential
-  Production forestry
-  Plantation forestry
-  Nature conservation
-  Grazing natural vegetation
-  Perennial horticulture
-  Irrigated perennial horticulture
-  Irrigated seasonal horticulture
-  Intensive animal production
-  Irrigated cropping
-  Cropping
-  Channel/aqueduct
-  Marsh/wetland
-  Reservoir/dam
-  River
-  Other minimal use



**Black Ross WQIP
2005 Landuse -
Magnetic Island**



146°46'E 146°47'E 146°48'E 146°49'E 146°50'E 146°51'E 146°52'E 146°53'E